

2019



COMMUNITY REPORT CARD

★
Lenawee ★
Cradle to Career ★
Pathways to Success ★



Dear Community Members:

Thank you to all of our community partners in the Lenawee Cradle to Career effort which has been in existence since 2013. The Lenawee C2C Partnership is focused on moving our community forward in the area of five adopted outcome measures. This annual report card contains the most recent data on these outcomes and also gives you some examples of the good things going on in each of the focus areas.

We are continually looking for committed individuals who would like to be involved with this collaborative effort to positively impact the lives of each Lenawee County child and citizen. If you are interested in getting involved and helping create success from “cradle to career” for all Lenawee County citizens, please reach out to us. Together we can build from the incredible resources and strengths in our community to impact future success.

Sincerely,

MARK HAAG

Superintendent, Lenawee Intermediate School District

SHANNON ELLIOTT

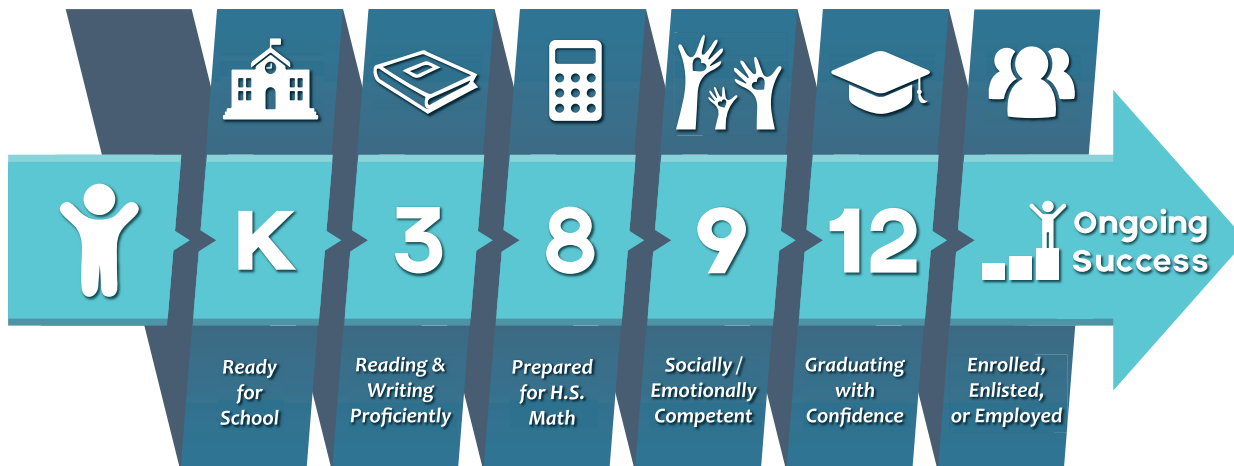
Deputy Director, Lenawee County Probate Juvenile Court

Co-Chairs of the Lenawee Cradle to Career Executive Leadership Team



Contents

Vision, Mission, Process	3
Outcomes Dashboard	4
School Readiness	6
Reading & Writing	8
Social Emotional Competence	10
High School Graduation	14
Enrolled, Enlisted, or Employed	16
Leadership and Partners	18



Lenawee Cradle to Career (C2C) is a community-comprised partnership working to ensure pathways of success for every child, every step of the way, cradle to career. We are a member of StriveTogether (strivetogther.org), a national network of like partnerships.

C2C began in 2013 when Lenawee County superintendents agreed to move educational impact from individual action toward collective work. Along the way, representatives from faith-based organizations, local agencies, and the business community have rounded out the cross-sector partnership.



Vision

Every child, every step of the way, cradle to career

Mission

To ensure that everyone has pathways to reach their potential, cradle to career

AS A COUNTY, WE'RE WORKING TO MOVE FROM INDIVIDUAL ACTION TO COLLECTIVE IMPACT.

COLLECTIVE IMPACT

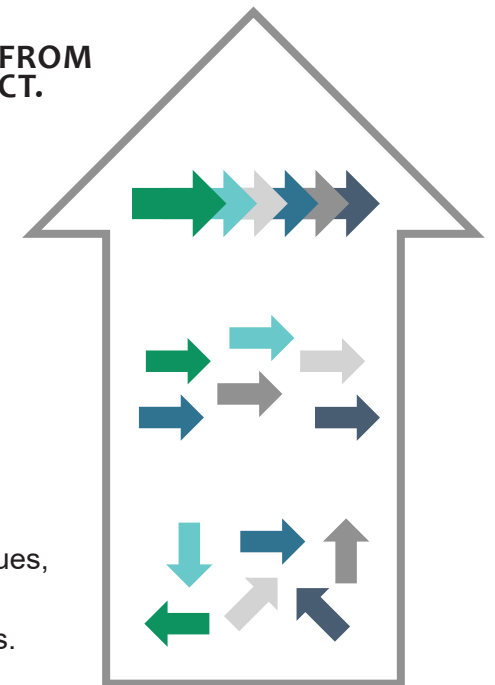
- › A group working towards the same outcome,
- › Looking at student level data,
- › To continuously improve practices over time.

COORDINATED IMPACT

- › A group working on the same issue,
- › Sharing program level data,
- › To identify best practices and align efforts.

INDIVIDUAL IMPACT

- › Individual practitioners working on specific issues,
- › Collecting qualitative and quantitative data,
- › To demonstrate impact with individual students.



2019 Community Outcomes Dashboard for Lenawee County, Michigan



Description	School Readiness	Reading & Writing by Third	Eighth Grade Math	Social Emotional Competence	High School Graduation	Enrollment, Enlistment, Employment
2019 Data	48%	47%	36%	4 districts participated	89%	63%
% Change Since Data Collected	3%	1%	6%	N/A		3%
African American	39%	29%	35%	N/A	86%	31%
Hispanic	47%	35%	31%	N/A	88%	62%
Economically Disadvantaged	N/A	36%	24%	N/A	82%	49%
Students with Disabilities	25%	12%	0%	N/A	74%	26%

A Snapshot of Lenawee



5.5%
UNDER AGE 5

19.0%
AGE 65+

21.1%
UNDER AGE 18

80 years
FEMALE LIFE EXPECTANCY

77 years
MALE LIFE EXPECTANCY



10.4%

(1 OUT OF 10)
BELOW FEDERAL
POVERTY LEVEL

13.8%

(1 OUT OF 7)
RECEIVE FOOD STAMPS
/ SNAP BENEFITS

14.3%

(1 OUT OF 7)
UNDER AGE 18
& BELOW POVERTY LEVEL

26.6%

(1 OUT OF 4)
ALICE CONDITION
*Asset Limited, Income
Constrained, Employed*

24%

AGE 25+ WITH SOME
COLLEGE, NO DEGREE



21%

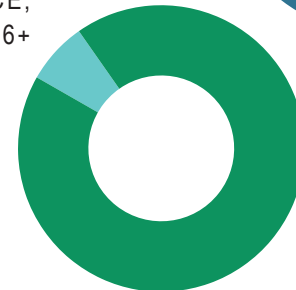
AGE 25+ WITH A POST-
SECONDARY DEGREE

\$53,972
MEDIAN INCOME

\$754

MEDIAN
GROSS RENT
PER MONTH

1,918
NOT EMPLOYED,
IN LABOR FORCE,
AGE 16+



46,596
EMPLOYED,
IN LABOR FORCE,
AGE 16+

2,532 CHILDREN WERE THE SUBJECT OF
AN OPEN CHILD ABUSE OR NEGLECT
CASE, UP FROM 1,596 IN 2010



36%

SINGLE PARENT HOUSEHOLDS

WORLD LIFE EXPECTANCY
www.worldlifeexpectancy.com/usa/michigan-life-expectancy

MICHIGAN ASSOCIATION OF UNITED WAYS
www.uwmich.org/alice

STATISTICAL ATLAS
www.statisticalatlas.com/state/Michigan/Food-Stamps

TOWNCHARTS EDUCATION DATA
www.towncharts.com/Michigan/Education/Lenawee-County-MI-Education-data.htm

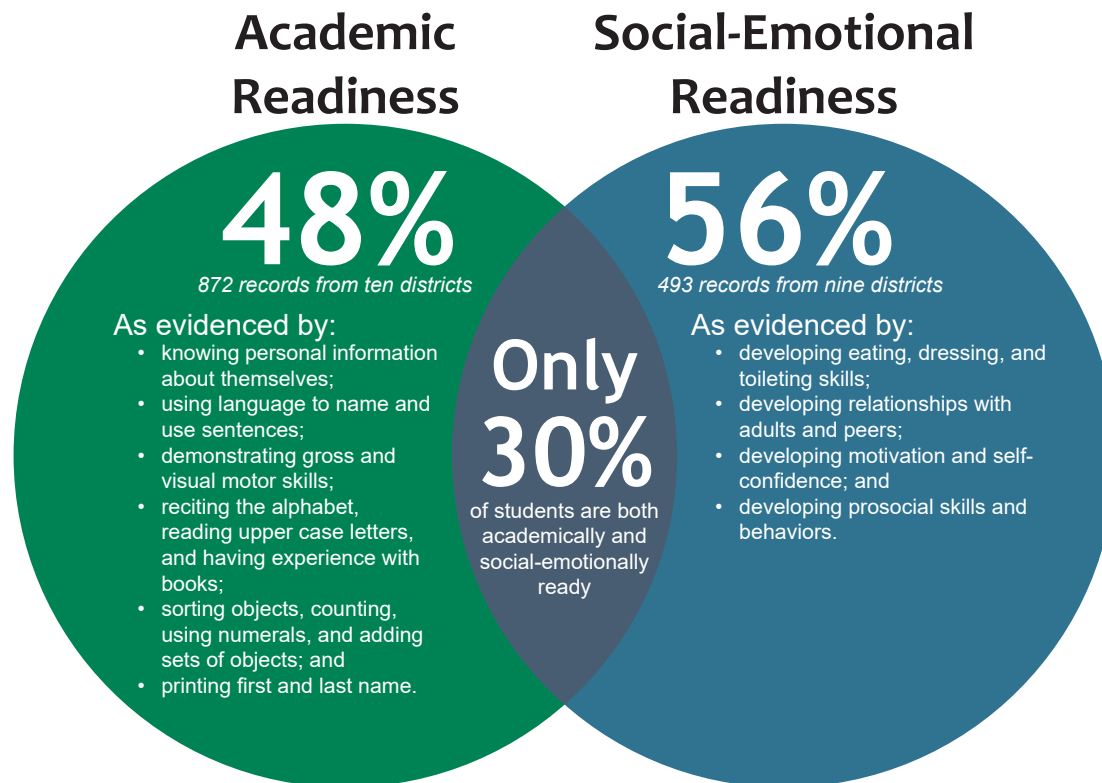
US BUREAU OF LABOR STATISTICS
www.bls.gov/lau/

School Readiness

48% of Kindergarteners were academically ready for school in Fall 2019

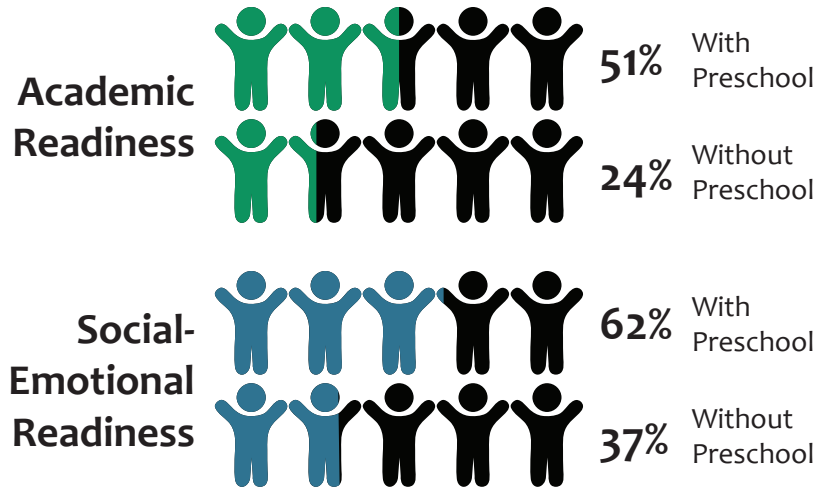
The 2016 strategic plan session established the following desired outcome: The percentage of students scoring a benchmark for kindergarten readiness will increase from 50% to 85% by 2022, as measured by the BRIGANCE Assessment, administered by local districts in the spring before students enter kindergarten.

In addition to the BRIGANCE core academic indicators assessment, local districts have begun administering a unified social emotional assessment. Here's what was learned in 2019:



A Key Readiness Indicator

Preschool experience (of any kind) proved to dramatically improve a child's readiness for school. Children with preschool experience are **twice as likely** to be academically ready, and **more likely** to be social-emotionally ready than children without preschool experience.



47

Licensed preschool providers throughout Lenawee County

Contact: Liz Fuss, Child Care Network

517-264-5324

www.greatstarttoquality.org

March

Celebrating Lenawee's Children is a free family resource fair to equip families to prepare children for school and life. This event is held annually in March at the Adrian Mall.

1,400

Lenawee children ages birth-5 receive books by mail each month through Imagination Library. The scarcity of books is a key contributor to the cycle of educational disadvantage.

Contact: Cynthia Heady
Lenawee Community Foundation
cynthia@lenaweecf.com

Reading & Writing

47% of third graders were proficient in Spring 2019

The 2016 strategic plan session established the following desired outcome: The percentage of students proficient in reading by the end of grade 3 will increase from 48.8% to 55% as measured by the M-STEP 3rd grade assessment in Spring 2020.

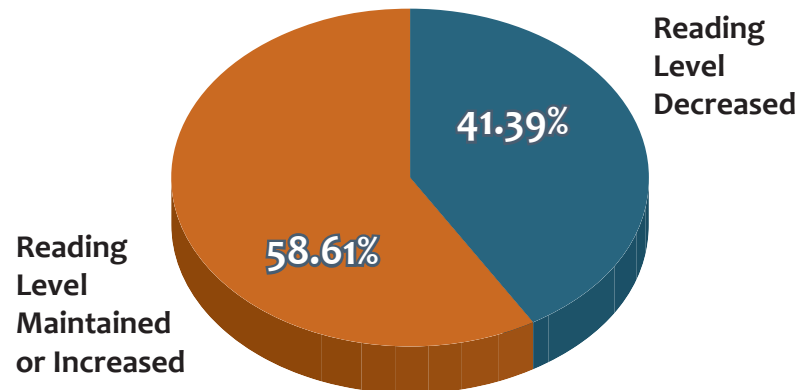
The Lenawee C2C Literacy Network has focused work on reducing summer literacy slide. Numerous studies show that students who don't read during summer vacation actually slip in reading ability by fall. Opportunities for children to engage learning activities during the summer months are difficult for many. The network developed partnership agreements to offer 11 “Summer Lit Lab Pop-Ups” throughout the county. Each site offered free weekly literacy activities, as well as parent-engagement opportunities. Books and free two-day meal packs were provided to children each week.

County-Wide Pop-Up Reading Impact

The Lit Lab Pop-Ups saw a total of **1,134 students** log over **3,200 visits** during the summer.

This data analyzes each student's reading level. A teacher completes an assessment in the classroom in both the spring and fall. The assessment measures multiple aspects of a student's reading abilities, including comprehension, fluency, and accuracy.

When focusing on the effects of summer slide, the goal is to maintain or increase a student's reading level from the spring assessment to the fall assessment.



Summer Lit Lab Pop-Up Partners: Goodwill Industries of Southeast Michigan, 192 Ministries, Lenawee Boys & Girls Club, Lenawee County's public school districts, Lenawee Foster Grandparent Program, Lenawee Habitat for Humanity Neighborhood Revitalization Project



Engaged

"Our members benefit greatly from the Summer Lit Lab Pop-Ups. Our members are always engaged in each activity, clearly showing how much thought goes into the planning of these events."

Eric Gillespie, Club Director
Boys & Girls Club of Lenawee

Parrish Park

A collaboration with Habitat for Humanity of Lenawee County brought a Lit Lab Pop-Up to this park in Historic East Adrian as part of a broader neighborhood revitalization effort.

Confidence

"An incoming kindergartner said that she felt so much more confident on the first day of school because she had been in the building throughout the summer and had also made friends with other kids."

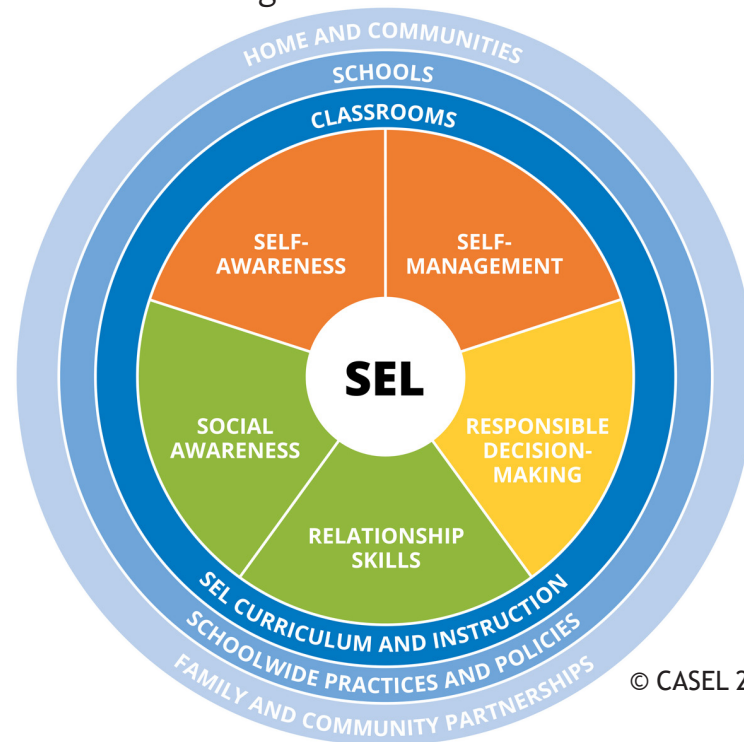
Mary Stevick
Addison Site Leader

Social Emotional Competence

4 districts participated in the CASEL framework in 2019

Four districts in Lenawee County were involved in the collection of quantitative and qualitative data sets in the 2018-2019 school year to create baseline profiles for beginning intentional support for social-emotional learning. This data collection aligns with the Lenawee Cradle to Career's efforts to promote the increase of social and emotional competencies among students to increase academic achievement across its educational goals. The county is using the CASEL (Collaborative for Academic, Social, and Emotional Learning) framework as a common language for this work. The CASEL framework is guided by five competencies, including self-awareness, self-management, social awareness, relationship skills, and responsible decision-making.

In addition to the student competencies inventory, each school held a student voice focus group, facilitated by members of the Building Safe and Healthy Communities action group. Students from each building met to share their perceptions of school, providing qualitative data on school climate and culture within the buildings. These data points, shared with each district individually, informed leadership about future decision-making around social-emotional learning. The Lenawee Intermediate School District (LISD) also provided several professional learning sessions during the school year around the CASEL framework, with 10 local public districts participating.



© CASEL 2017

Social and Emotional Learning (SEL) Competencies

Self-Awareness

The ability to accurately recognize one's own emotions, thoughts, and values and how they influence behavior. The ability to accurately assess one's strengths and limitations, with a well-grounded sense of confidence, optimism, and a "growth mindset."

- ▶ IDENTIFYING EMOTIONS
- ▶ ACCURATE SELF-PERCEPTION
- ▶ RECOGNIZING STRENGTHS
- ▶ SELF-CONFIDENCE
- ▶ SELF-EFFICACY

Social Awareness

The ability to take the perspective of and empathize with others, including those from diverse backgrounds and cultures. The ability to understand social and ethical norms for behavior and to recognize family, school, and community resources and supports.

- ▶ PERSPECTIVE-TAKING
- ▶ EMPATHY
- ▶ APPRECIATING DIVERSITY
- ▶ RESPECT FOR OTHERS

Responsible Decision-Making

The ability to make constructive choices about personal behavior and social interactions based on ethical standards, safety concerns, and social norms. The realistic evaluation of consequences of various actions, and a consideration of the well-being of oneself and others.

- ▶ IDENTIFYING PROBLEMS
- ▶ ANALYZING SOLUTIONS
- ▶ SOLVING PROBLEMS
- ▶ EVALUATING
- ▶ REFLECTING
- ▶ ETHICAL RESPONSIBILITY

Self-Management

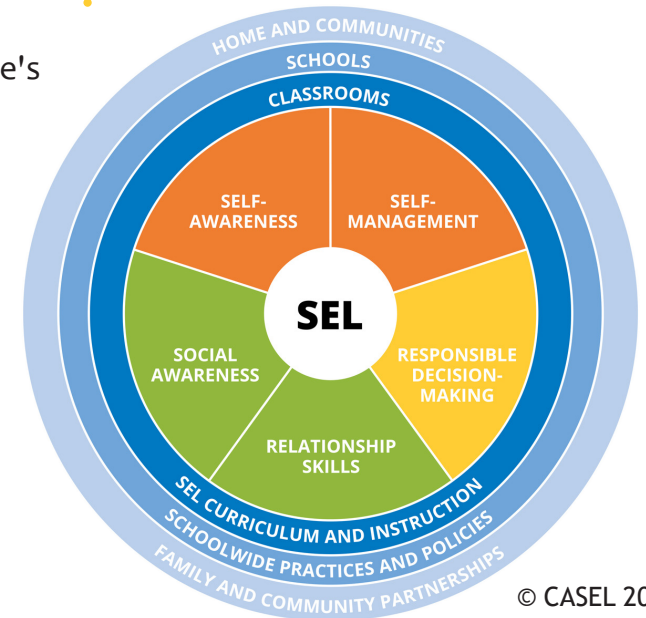
The ability to successfully regulate one's emotions, thoughts, and behaviors in different situations - effectively managing stress, controlling impulses, and motivating oneself. The ability to set and work toward personal and academic goals.

- ▶ IMPULSE CONTROL
- ▶ STRESS MANAGEMENT
- ▶ SELF-DISCIPLINE
- ▶ SELF-MOTIVATION
- ▶ GOAL SETTING
- ▶ ORGANIZATIONAL SKILLS

Relationship Skills

The ability to accurately recognize one's own emotions, thoughts, and values and how they influence behavior. The ability to accurately assess one's strengths and limitations, with a well-grounded sense of confidence, optimism, and a "growth mindset."

- ▶ COMMUNICATION
- ▶ SOCIAL ENGAGEMENT
- ▶ RELATIONSHIP BUILDING
- ▶ TEAMWORK



© CASEL 2017



Mental Health

In 2019, Lenawee Community Mental Health Authority and 7 school districts partnered to provide school based mental health services. Services provided included Crisis Intervention and Individual, Group and Family therapy.

At Birth

"It's important to understand that SEL starts in the home at birth. While there are many things we can do with our young children, modeling positive social emotional behavior on a consistent basis is the key to effective early childhood development."

Steve Laundra, Superintendent
Sand Creek Community Schools

PBIS

The LISD is taking the lead in the county to create a Positive Behavior Interventions and Supports (PBIS) model that can be replicated at the local district level.

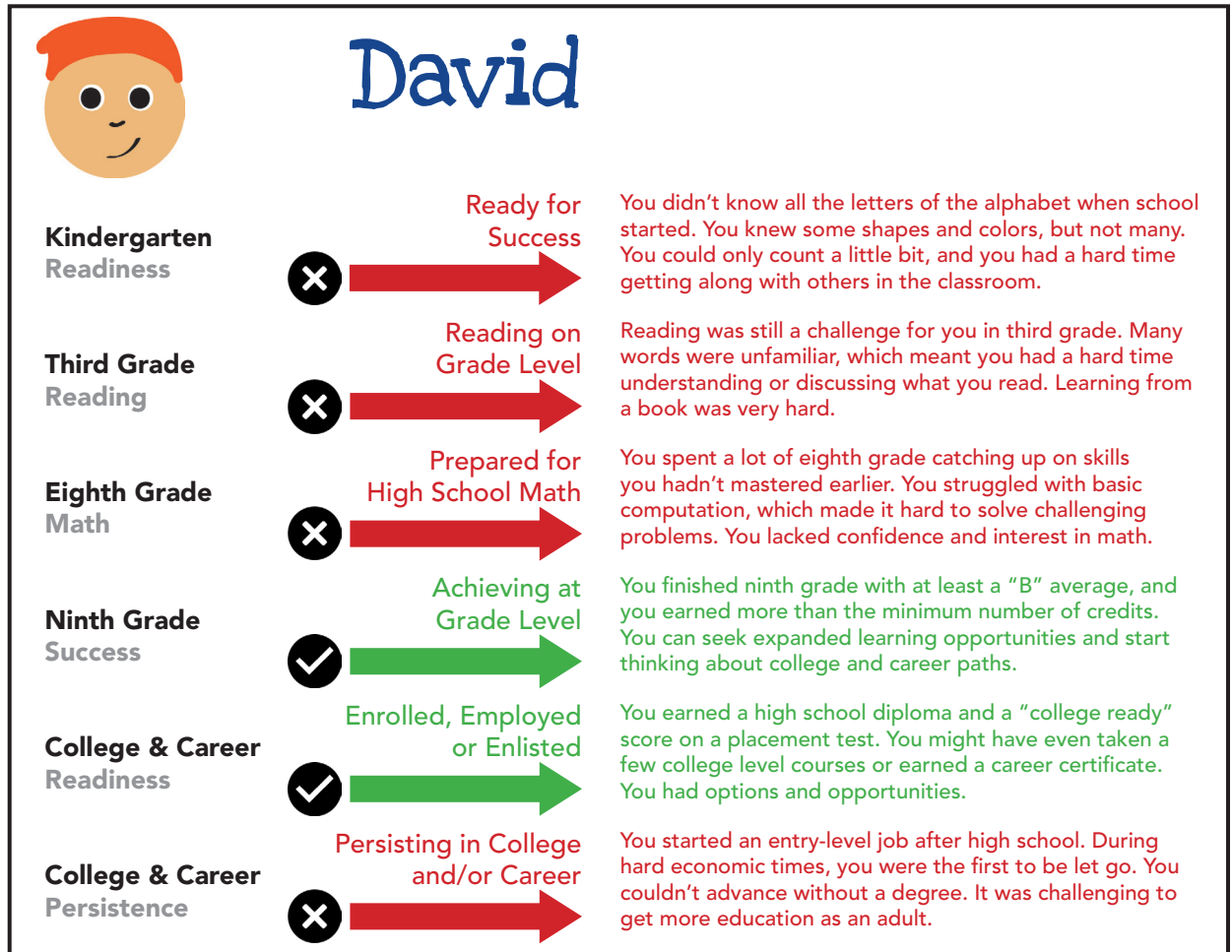
This work is happening through the Transformation Zone, a partnership with the Michigan Department of Education and the SISEP Center focused on changing education systems to support effective practices.

C2C Experience

In early 2019, Lenawee Cradle to Career debuted the C2C Interactive Experience, a 90-minute facilitated experience that positions participants in the perspective of a child navigating critical transitions from cradle to career. The experience demonstrates the power and effect of shared resources and collaborative intervention in a child's life, while helping to communicate the vision and desired outcomes of Lenawee C2C to the broader community. This tool was presented on five occasions in the spring of 2019 to various groups.

This resource was purchased from Summit Education Initiative and adapted for use in Lenawee County. Funding was graciously provided by the Blissfield Area Lyons Club, the Kiwanis Club of Adrian, United Way of Monroe & Lenawee, and the LISD.

Below is an example of a student profile used in the C2C Interactive Experience.



Did You Know? 2018 MiPHY* Student Survey Data

*Michigan Profile for Healthy Youth

Six different questions related to bullying showed an improvement trend of 5% or better across Lenawee County in the past five years.

53% of Lenawee County juniors reported having people in their family engaged in serious arguments. This was a 6% increase from five years ago.

35% of Lenawee County freshmen and juniors reported experiencing two or more of the following in their life:

- Death of a parent or caregiver
- Mental, physical, or sexual abuse
- Witnessing violence in home or neighborhood
- Lived with a person with mental illness or had attempted suicide
- Lived with a person who was an alcoholic or drug dealer
- Lived with a person who went to jail or prison

High School Graduation

89% of the Class of 2017 graduated high school within five years

The 2016 strategic plan session established the following desired outcome: The percentage of students graduating from high school earning a certificate of completion will increase from 86% to 100% by August 2023, as measured by the five-year cohort of the Class of 2023, as reported by the Michigan Department of Education.

One of the biggest obstacles to graduating on time is a sustained number of school absences. Fortunately, chronic absenteeism in Lenawee County is declining. The state currently defines chronic absenteeism as being absent 10% or more days (18) in a school year. Missing more than 50% of any day for any reason is considered an absence. In the last five years, these definitions have changed. Our county's improvement has not.

Lenawee County's chronic absenteeism percentage (13.8%) is 7th best in the state, up from 23rd six years ago. Even so, we have over 2,000 children missing 10% or more days of school each year.



Truancy Prevention System

In 2018, a local truancy prevention system was developed. Working collaboratively, the Lenawee Intermediate School District, Lenawee Juvenile Court, Lenawee County Mental Health Authority, and the Department of Health and Human Services provide intervention and support services earlier and before a child is in front of the court.

School Intervention - after five absences, the school engages the family to listen and offer in-district support.

Truancy Prevention - LISD Truancy Prevention Specialist aids family and student to engage resources, identify issues, and overcome additional barriers. Court interns assist with calls.

Truancy Conference - representatives from family-serving organizations meet with the family to provide multi-agency wrap-around support to avoid court intervention.

Legal Intervention - if services provided prove insufficient, a court petition is filed for prosecutorial review.

38.7%

of Lenawee County's chronically absent students are homeless, compared to 12.9% of non-homeless students.

81%

of Lenawee students graduated with a completed Education Development Plan (EDP), utilizing Career Cruising software.

Career Navigators

"We are excited to create a systematic talent pipeline by working with educators, employers, and other organizations to assist students and their families in understanding and identifying credential programs and employment opportunities."

Michael Fox, Jr.
Lenawee Now

Enrolled, Enlisted, or Employed

63% of the Class of 2018 enrolled in post-secondary institutions

The 2016 strategic plan session established the following desired outcome: The percentage of Lenawee County high school graduates enrolling in their post-secondary choices within the first year after high school graduation will increase from 66% to 73% by the end of 2019, using data from the National Student Clearinghouse and workforce databases.

College Application Month

Every public school in Lenawee County devotes the month of October to the post-secondary plans of their students. This has expanded from a week-long focus prior to 2017.

Activities during the month include:

- Applying to colleges, with most high schools encouraging students to apply to at least two colleges or universities.
- FAFSA (Free Application for Federal Student Aid) informational and completion nights. **61% of Lenawee high school seniors completed a FAFSA in 2019.**
- Informational opportunities during parent/teacher conferences, providing parents with materials on a variety of post-secondary options.





A four-year college is not the only post-secondary choice for Lenawee students. Many pursue a valuable credential. While this is difficult to track, it's not too difficult to define.

A valuable credential is:

1. Post secondary in nature, meaning it is a credential that is in addition to a high school diploma or GED.
2. Conferred by one or more of the following:
 - a. An accredited, Title IV institution of higher education
 - b. A license from a state agency or commission
 - c. A regulatory certificate from a state agency or commission
 - d. An apprentice program registered with the US Dept. of Labor
3. Recognized by industry employers as having a meaningful value.

916

College credits were earned by the JC/LISD Academy class of 2019 through dual-enrollment. The 15 students also earned 14 combined Associate degrees.

\$23,000

Awarded in 2019 to 12 non-college bound students seeking assistance in pursuing employment through the Lenawee County Education Foundation's Ronald Reeves Job Readiness Training Grants.

Experience

Michigan Works! Southeast offers paid work experience opportunities to youth that develop essential communication and workplace skills. This program partners with local employers to meet their talent needs and build jobseekers' confidence.

Executive Team

Shannon Elliott

Co-Chair

Mark Haag

Co-Chair

Patricia Gray

John Haught

Michael Masters

Christine MacNaughton

Data Team

Stan Masters

Chair

Jackie Bradley

Mallory Frailing

Liz Fuss

Chris Howard

Christine MacNaughton

Amanda Morris

Jim Southard

Eleanor Wollet

Community Leadership Team

Beth Abbott

LISD PREP Academy

Vanessa Armstrong

Lenawee Great Start

De'Angelo Boone

Habitat for Humanity

Jackie Bradley

Lenawee Co. Mental Health Authority

Christie Cadmus

Lenawee Great Start

Marsha Davis

Onsted Community Schools

Madeline DeMarco

Lenawee Co. Mental Health Authority

Lisa Eack

Lenawee Great Start

Shannon Elliott

Lenawee County Court

Michael Fox, Jr.

Lenawee Now

Deb Followell

Tecumseh Public Schools

Liz Fuss

Child Care Network

Patricia Gray

Siena Heights University

Eric Gillespie

Boys & Girls Club of Lenawee

Mark Haag

LISD Superintendent

John Haught

Goodwill Industries of SE Michigan

Jenny Heath

LISD TECH Center

Kellie Henning

Dept. of Health & Human Services

Chris Howard

LISD

Christine MacNaughton

Building Safe & Healthy Communities

Michael Masters

Jackson College

Stan Masters

LISD

Heather Perez

Community Learning Connections

Cari Rebottaro

Lenawee Department on Aging

Matt Swartzlander

Adrian Chamber of Commerce

Kathleen Shepherd

Monroe Community College

Michael Smith

United Way of Monroe & Lenawee

Annette Sobocinski

Child Care Network

Jim Southard

Lenawee Community Foundation

Janelle Stewart

Michigan State University Extension

John Wanke

Lenawee Co. Education Foundation

Libby Watson

Adrian Symphony Orchestra

Randy Yagiela

Lenawee Now

Community Partners

C2C's network is made up of partners across various sectors in the community, and contribute in countless ways, including:

- Providing access to data, meeting space, or other essential information;
- Engaging in the work around one or more of C2C's desired outcomes;
- Sustaining C2C through in-kind personnel and/or funding; and/or
- Actively promoting, disseminating, and endorsing the work of C2C.

Get Involved!

If you or your organization is interested in knowing more about being a Lenawee Cradle to Career Partner, please contact:

Tim Kelly, Director of
Lenawee Cradle to Career

tim.kelly@lisd.us

517-265-1636

LENAWEE ISD

The backbone organization providing personnel for the daily operation of the partnership.

EDUCATION

Addison Community Schools
Adrian College
Adrian Public Schools
Blissfield Community Schools
Britton Deerfield Schools
Clinton Community Schools
Hudson Area Schools
Jackson College @ LISD TECH
Lenawee Christian School
LifeTech Academy
Madison School District
Montessori Children's House of Lenawee
Morenci Area Schools
Onsted Community Schools
Sand Creek Community Schools
Siena Heights University
Tecumseh Public Schools

BUSINESS & INDUSTRY

Athletico
Clift Buick GMC
First Federal Bank
Glycon Corporation
Image Center
Lenawee's Heart and Soul
Living in Lenawee Realty
ProMedica Bixby & Herrick Hospitals

PUBLIC & GOVERNMENT

Adrian Area Chamber of Commerce
City of Adrian
City of Morenci
City of Tecumseh
Lenawee Community Mental Health Authority
Lenawee County Administrator's Office
Lenawee County Juvenile Court
Lenawee Department on Aging
Lenawee Department of Health & Human Services

SOCIAL SECTOR

Adrian Breakfast Lions Club
Adrian District Library
Adrian Morning Rotary
Adrian Noon Rotary
Adrian Rea Literacy Center
Adrian Symphony Orchestra
Blissfield Area Lions Club
Blissfield Rotary Club
Boys & Girls Club of Lenawee
Catholic Charities of Jackson, Lenawee, and Hillsdale Co.
Child Care Network
Community Action Agency
Community Learning Connections
Family Counseling & Children's Services
Gateway Community Church
Goodwill Industries of Southeastern MI
Habitat for Humanity of Lenawee County
I92 Ministries
Kiwanis Club of Adrian
Lenawee College Access Network
Lenawee Community Foundation
Lenawee County Education Foundation
Lenawee District Library
Lenawee Great Start Collaborative
Lenawee NAACP
Lenawee Now
Lenawee Substance Abuse Prevention Coalition
Michigan State University Extension
Michigan State University - Hidden Lake Gardens
Michigan Works! Southeast
Omega Youth Empowerment
One Lenawee
United Way of Monroe/Lenawee Counties
YMCA of Lenawee County